

A reliable and trusted partner



ISO 9001:2015
ISO 45001:2018
Certified



CERTIFIED
ISO 37001





Vision:

To become a sustainable and trusted human resource solution company by continuously creating meaningful employment opportunities globally



Mission:

We exist to enhance the lives of our stakeholders through strengthening business fundamentals delivered by professional and passionate employees

About CUA



With over four decades of experience, PT. Ceria Utama Abadi is a manpower supply company known for its trusted human resource management services. We are committed to providing quality solutions tailored to meet the specific needs of our stakeholders, and we strive to maintain this commitment to build lasting trust.



Founded
1982



No. of employee
5000+



Average Yearly Revenue for
the last three years (2022, 2023, 2024)

USD 44 M



Service Location
**All Across
Indonesia**



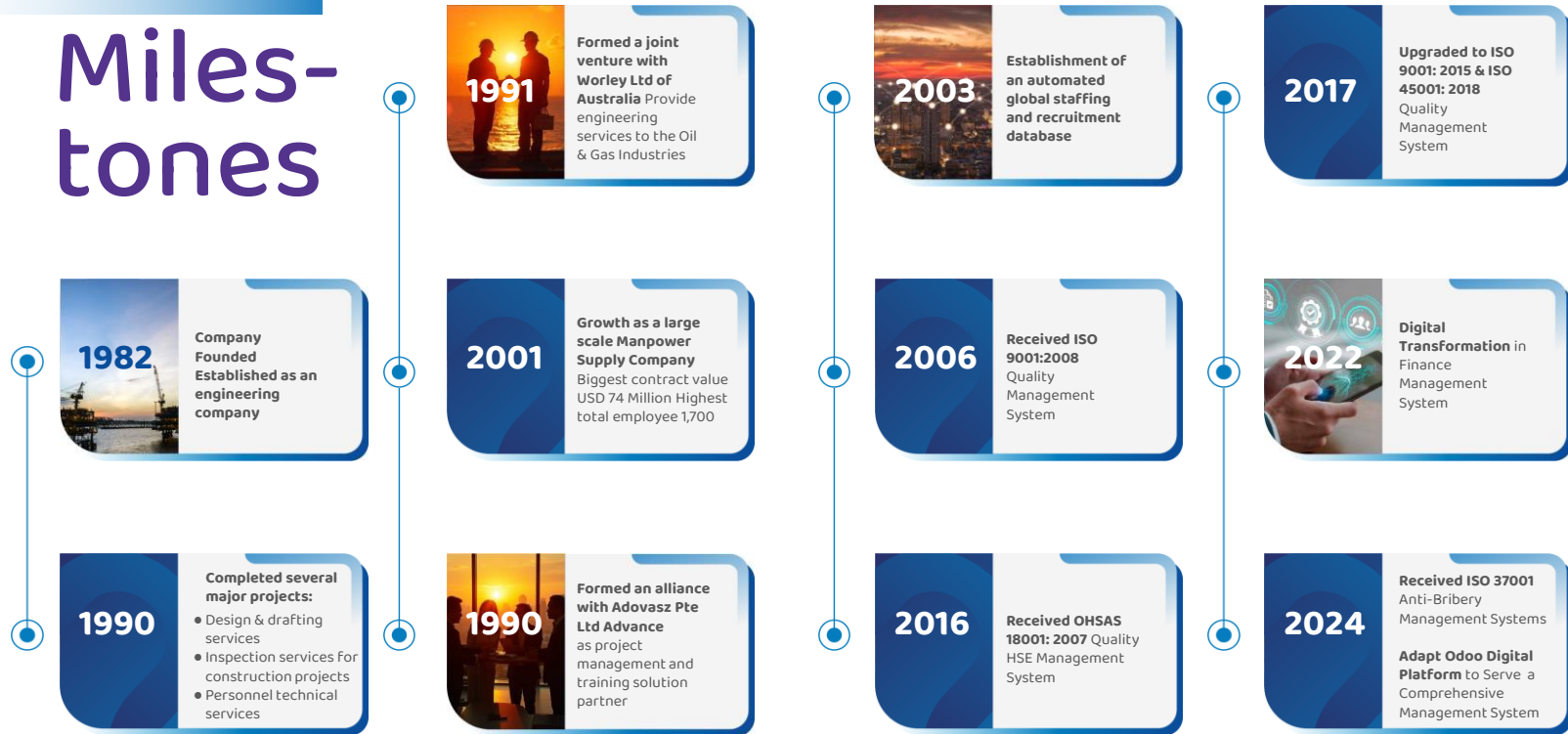
Global coverage

Overseas Headhunter Partner
Singapore | UK | Australia | Italia
France | South Korea | Malaysia

Overseas Recruitment Contract
Qatar | Libya | Saudi Arabia

Company

Miles-tones



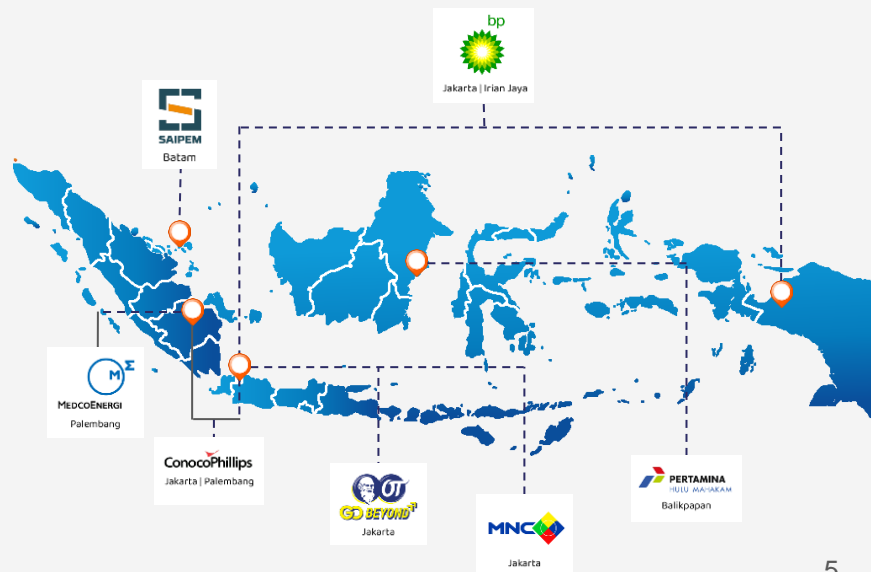
Project Case

(the most high impact project case)

01	2019–2025	SAIPEM	Manpower Support Service	IDR 502 Billion	USD 32.9 Million
02	2019–2025	Pertamina Hulu Mahakam	Manpower Support Service	IDR 1,986 Trillion	USD 133.7 Million
03	2019–2025	MEDCO	Manpower Support Service	IDR 428 Billion	USD 29.1 Million
04	2018–2022	ELNUSA	Manpower Support Service	IDR 337 Billion	USD 23.7 Million
05	2010–2014	ConocoPhillips	Manpower Support Service	IDR 666 Billion	USD 74 Million

Empowering Industries Across Indonesia

As one of Indonesia's trusted manpower providers, CUA takes pride in its proven track record of delivering professional, reliable, and innovative workforce solutions to many well-known companies nationwide. With a deep understanding of industry demands and a commitment to excellence, we have become a strategic partner in driving productivity and success for businesses from various sectors.





Our Service

WE OFFER COMPREHENSIVE RECRUITMENT
AND MANPOWER SOLUTIONS

We have a proven ability to quickly provide numerous workers across a range of demanding professions. Our cash flow capabilities are specifically designed to support workforce management, aided by an efficient digital system for personnel management. This operational strength is key to our commitment to delivering reliable services and supplying workers in various industries.



CONSTRUCTION

- Construction Manager
- Construction Supervisor
- Resident Engineer
- Welding Engineer
- Corrosion Engineer
- Pipeline Engineer
- Commissioning Engineer
- Commissioning Technician
- Welder, Fitter, Rigger, Scaffolder, and other workforce



F&B

- Head of Sales
- SAP Accounting
- Store Manager
- Marketing & Communication Manager



ENGINEER

- Project Engineers
- Pipeline Engineers
- Instrumentation Engineers
- Mechanical Engineers
- Structural Engineers
- Piping Engineers
- Process Engineers
- Electrical Engineers
- Fire and Gas Engineers
- Design Draftspersons
- Safety Engineers
- Quality Assurance / Control Engineers



DIGITAL INDUSTRY

- IT Development Manager
- Group Head of Digital Marketing
- IT Security and Compliance Manager
- QA Head
- Head of IT Infrastructure and Operational
- Head of IT Division
- Dep. Head of Internal Audit



SPECIALIST

- Payment Gateway Transformation Specialist
- Mechanical & Electrical System Specialist



OTHER SPECIALIST

- Contract Engineers / Administrator
- Cost and Estimating Engineers
- Planning Engineers
- Quantity Surveyors
- Document Controllers
- Materials Controllers / Expeditors
- Materials and Procurement Supervisor
- Technical Clerks
- Technical Authors

Our Client



Project on going



"When people are financially invested, they want a return. When people are emotionally invested, they want to contribute."

- Simon Sinek

A man in a dark blue suit and light blue tie is holding a tablet. Overlaid on the image is a glowing digital network of nodes and lines. In the background, a city skyline with illuminated buildings is visible at night.

**"A motivated manpower is the
most important thing"**

Thank You

Main Office Address :

Jl. Prof.Dr.Soepomo SH. No.3. RT/RW 02/01
Kec. Menteng Dalam. Kel.Tebet.Jakarta 12870. Indonesia

T: +62 21 8282142 **M:** ceria@cbn.net.id
F: +62 21 8282145 **W:** ceria.com

Main Office Address :

Jl. Milono no 7. RT 43.Kel. Gunung Sari Ilir.
Kec. Balikpapan Tengah. Kalimantan Timur

T: +62 542 424096 **M:** ceriabpp@indo.net.id
F: +62 542 414966 **W:** ceria.com

